
COMPANY PROFILE

ABB in Australia

A pioneering technology leader



ABB

A pioneering technology leader



—
ABB DRIVING PROGRESS
FOR MORE THAN

130

years and across
100 countries

—
ANNUALLY,

\$1.5b

dedicated to research
and development

—
R&D ACTIVITIES
DRIVEN BY

8,000

technologists, across
7 global corporate centres

—
ABB AUSTRALIA HAS

1,300

employees, across 14 sites

The world is facing increased demand for energy and industry, while the need to balance progress with environmental protection continues to grow.

Established countries must cope with ageing, overstretched infrastructures to achieve growth, while developing countries require completely new processes and energy sources.

It takes sophisticated technologies to tackle these challenges. From satellite instruments measuring greenhouse gasses 650 km above the earth, to power supplies for an oil and gas pump 300 metres below the sea, ABB innovations are in action all around the world, every day.

ABB has been driving progress, productivity and safety for utilities, industry, transport and infrastructure customers for more than 130 years across 100 countries.

In Australia, our history goes back to the late nineteenth century. Today, we have operations in Sydney, Melbourne, Brisbane, Perth, Adelaide and Darwin. With 1,300 employees located across 14 sites, we serve our customers through an extensive country-wide presence.

ABB at a glance

What Offering

Pioneering technology



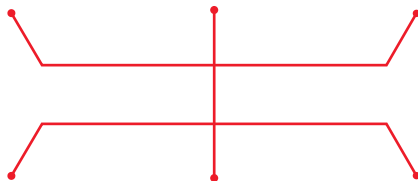
Products



Systems

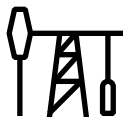


Services & Software



For whom Customers

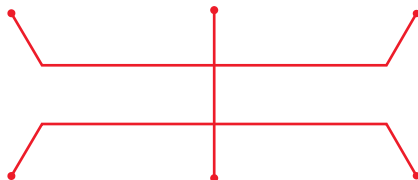
Utilities



Industry



Transport & Infrastructure



Where Geographies

Globally



Asia, Middle East and Africa



Americas



Europe

Revenue
~ \$34 bn

Countries
~ 100

Employees
~ 135,000



Wherever you see reliable power supplies, efficient road transport, and remarkable rail solutions, it's likely that ABB technology is involved. Most of it is working behind the scenes inside buildings and vehicles. While making our cities more liveable and our transport more attractive, ABB solutions strike a balance between meeting consumer wants and enhancing environmentally sustainable development.



Industry-leading digital solutions

As engineers, we're driven to advance technology. We know how to harness the power of digital to drive progress with our customers every day.



As a leader in software, mechanical and electrical engineering and materials science, we've always applied the best tools available for the task at hand. For more than 40 years, this has meant building software and connectivity into our devices and systems.

ABB Ability™ is our unified, cross-industry digital capability that connects customers' operations to the power of the Industrial Internet of Things. With more than 200 digital offerings, ABB Ability helps customers achieve better oversight and control of assets, reduce energy consumption and costs, and drive increased efficiency, performance and productivity.



ABB and Microsoft have joined forces to develop one of the world's largest industrial cloud platforms. This platform on Microsoft Azure will accelerate digital solutions that improve customers' productivity by increasing uptime, speed and yield.

Furthermore, we've partnered with IBM to bring together ABB Ability with IBM Watson. These joint solutions will bring real-time cognitive insights to the factory floor and smart grids.

ABB Ability™ is our unified, cross-industry digital capability that connects customers' operations to the power of the Industrial Internet of Things.



KNOW MORE

Leverage your industrial data through sensors, devices and software to know more about your business in real-time.

Innovation is an integral part of ABB Australia's DNA. We're proud to host ABB's global centres of excellence for microgrids and enterprise software – two specialist areas that are revolutionising the energy and industrial technologies.

Pioneered in Australia, our game-changing microgrid technology and solutions ensure power supply resilience, power quality, sustainability and cost-effectiveness in a broad range of applications.

In Australia, we're also proud to be the only industrial enterprise software solution provider with a combined Information Technology/Operational Technology (IT/OT) offering – and we're developing these solutions locally.

More than 1,100 asset-intensive companies globally trust our solutions to keep the lights on in the world's largest cities and venues, predict asset failures to ensure reliability for millions of rail commuters, and align mining production and operations resources in pursuit of their commercial strategies.

**DO MORE**

Monitor, control and manage your devices, processes and operations on-site or remotely.

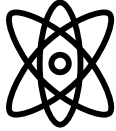
**DO BETTER**

Simulate, predict and optimise through tools, insights and analysis.

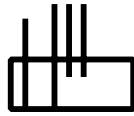
**TOGETHER**

Work hand-in-hand with our experts and engineers around the globe for business transformation.

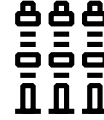
At ABB Australia, we have a proud history of many ‘firsts’.



WE PATENTED THE world's first technology to recycle SF6 gas to technical grade purity. ABB's technology effectively closes the loop on this greenhouse gas.



WE PARTNERED WITH Powerlink Queensland to install the first commercial digital substation that improved grid reliability and availability through advanced automation and the highest communications standards.



ABB'S HYBRID MICROGRID solution installed by Horizon Power in Western Australia's remote towns of Marble Bar and Nullagine set a new benchmark for isolated hybrid diesel power systems with extremely high renewable energy generation and conversion.



AUSTRALIA'S FIRST grid-integrated 'network' battery, the Thomastown Hybrid Grid Energy Storage, was developed by ABB.



ABB COMMISSIONED the world's largest high-pressure grinding roll drive system for Newmont's Boddington Gold Mine Expansion project in Western Australia – achieving maximum productivity levels and reduced energy consumption.



WE'VE PARTNERED with QGC to provide an integrated automation, safety and telecommunications system for the world's first project to convert coal-seam gas into liquefied natural gas.

Project highlights in Australia

RELIABLE AND EFFICIENT POWER SUPPLY

ABB's power technologies and medium-voltage drive systems power Australia's largest LNG project, and control the compressors that liquefy the gas.

AUSTRALIAN-FIRST WAVE ENERGY PROJECT

Renewable wave energy is now supplying electricity to the Western Australian power grid, in an Australian-first project utilising grid integration and process control technology from ABB.

WORLD FIRST MICROGRID SOLUTION

ABB is providing Woodside with a world first microgrid solution that will provide spinning reserve from a battery energy storage system for an offshore platform.

HIGH-TECH RAIL SOLUTION

ABB played an integral role in helping Western Australia's Public Transport Authority prepare for the future by providing a high-tech feeder station solution for the Butler Extension Project.

LARGEST WESTERN AUSTRALIAN WIND FARM

ABB's power technology was selected to support Western Australia's largest wind farm. The world's slimmest 33 kilovolt (kV) medium voltage switchgear was installed to ensure the highest levels of reliability and safety for the Collgar Wind Farm.



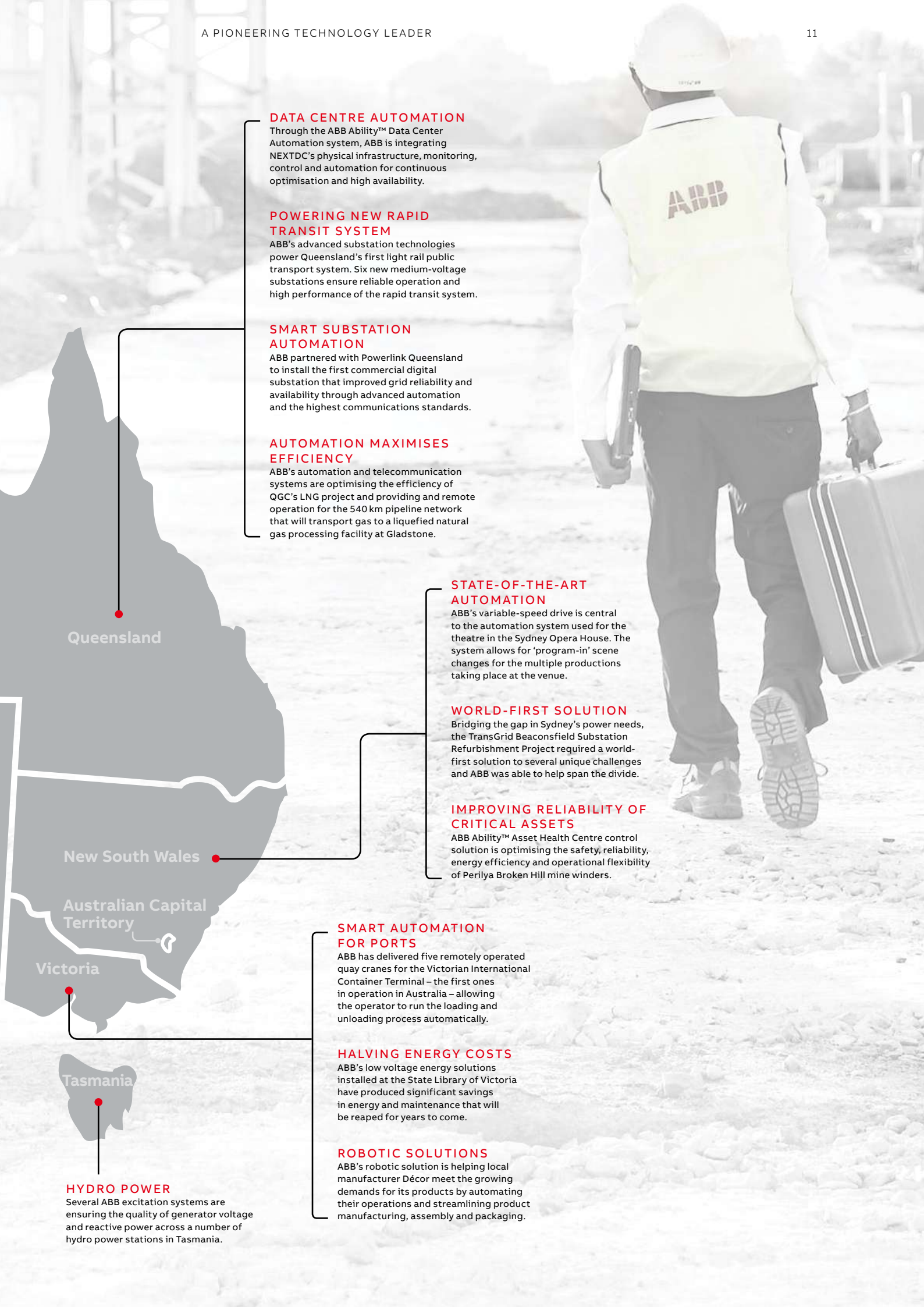
Northern Territory

Western Australia

South Australia

WORLD'S LONGEST UNDERGROUND POWER TRANSMISSION SYSTEM

The 177 km Murraylink transmission line uses ABB's unique HVDC Light technology to transfer 220-megawatts of power between the states of Victoria and South Australia.



DATA CENTRE AUTOMATION

Through the ABB Ability™ Data Center Automation system, ABB is integrating NEXTDC's physical infrastructure, monitoring, control and automation for continuous optimisation and high availability.

POWERING NEW RAPID TRANSIT SYSTEM

ABB's advanced substation technologies power Queensland's first light rail public transport system. Six new medium-voltage substations ensure reliable operation and high performance of the rapid transit system.

SMART SUBSTATION AUTOMATION

ABB partnered with Powerlink Queensland to install the first commercial digital substation that improved grid reliability and availability through advanced automation and the highest communications standards.

AUTOMATION MAXIMISES EFFICIENCY

ABB's automation and telecommunication systems are optimising the efficiency of QGC's LNG project and providing and remote operation for the 540 km pipeline network that will transport gas to a liquefied natural gas processing facility at Gladstone.

STATE-OF-THE-ART AUTOMATION

ABB's variable-speed drive is central to the automation system used for the theatre in the Sydney Opera House. The system allows for 'program-in' scene changes for the multiple productions taking place at the venue.

WORLD-FIRST SOLUTION

Bridging the gap in Sydney's power needs, the TransGrid Beaconsfield Substation Refurbishment Project required a world-first solution to several unique challenges and ABB was able to help span the divide.

IMPROVING RELIABILITY OF CRITICAL ASSETS

ABB Ability™ Asset Health Centre control solution is optimising the safety, reliability, energy efficiency and operational flexibility of Perilya Broken Hill mine winders.

SMART AUTOMATION FOR PORTS

ABB has delivered five remotely operated quay cranes for the Victorian International Container Terminal – the first ones in operation in Australia – allowing the operator to run the loading and unloading process automatically.

HALVING ENERGY COSTS

ABB's low voltage energy solutions installed at the State Library of Victoria have produced significant savings in energy and maintenance that will be reaped for years to come.

ROBOTIC SOLUTIONS

ABB's robotic solution is helping local manufacturer Décor meet the growing demands for its products by automating their operations and streamlining product manufacturing, assembly and packaging.

HYDRO POWER

Several ABB excitation systems are ensuring the quality of generator voltage and reactive power across a number of hydro power stations in Tasmania.

How we work

We not only have ambitious goals but also a clear agreement on how to achieve them. For us, the means are as important as the ends.

Safety and integrity

Every day, we strive to live these core values. Through our 'Don't look the other way!' approach, we encourage everyone to draw attention to behaviours and actions that might compromise health and wellbeing, or jeopardise their careers or our reputation.

Customer focus and quality

Our customers are at the centre of all our activities, and we aim to deliver the highest quality in everything we do. Knowing our customers, clearly focusing on them, and providing high-quality offerings and services makes us the partner of choice in highly competitive markets.



Innovation and speed

Innovation is not only the job of R&D — it's at the core of our company culture and is everyone's job at ABB. In today's fast-paced world, speed is essential — we act quickly, without being hasty, to master new technologies and stay ahead of the competition.

Ownership and performance

Focused, well-articulated responsibilities across our operations are paramount to drive performance to the next level. Organisational and individual performance are key to continuing success in a demanding world. Performance is expected from all of us every day in all our activities.

Collaboration and trust

Our mission is to be a trusted partner and advisor to our customers. Successful collaboration builds trust, thereby enabling us to write the future with all of our stakeholders. We continually strive to enhance collaboration internally to drive successful outcomes for our customers.



University collaboration

We believe in investing in the education and development of the next generation of innovators. In Australia, we have invested millions of dollars over the years, providing equipment for learning labs and scholarships for the University of Queensland, University of Sydney, Monash University and RMIT University in Melbourne.

ABB opened Australia's first certified KNX training centre at Melbourne's RMIT University, enabling electrical technicians and undergraduates to study the world's only open standard for home and building control.

As part of a partnership with the University of Queensland, students have access to ABB's Mechatronics Teaching Laboratory complete with ABB's System 800xA control system and industrial robot and drives packages, to facilitate continuous interaction between students, academia and industry.

Our business success reflects the quality and skills of our people. As one of the world's most global companies — in both the reach of our business and the diversity of our people — we foster a culture of openness, flexibility and inclusiveness that attracts and retains top performers.

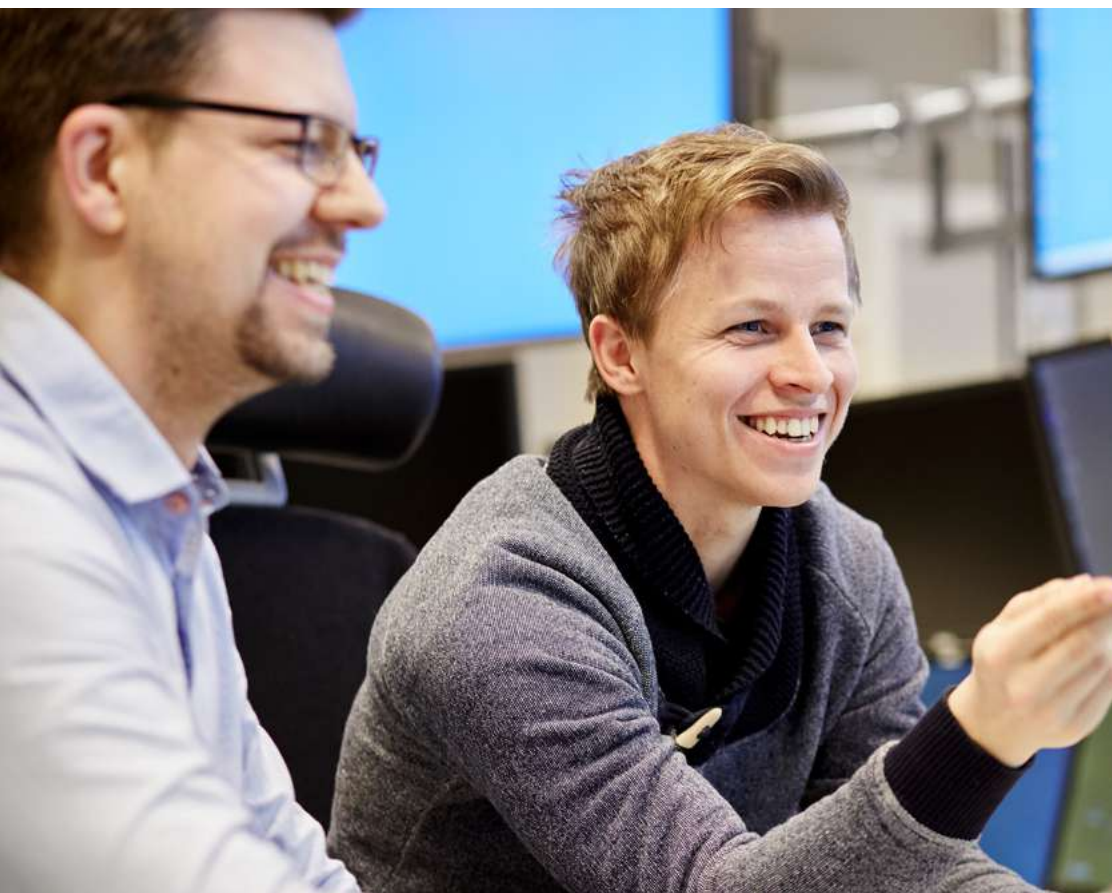


ABB IN AUSTRALIA
HAS INVESTED

millions

in providing equipment,
scholarships and learning labs

ABB OPENED AUSTRALIA'S
FIRST CERTIFIED

KNX
training centre



Indigenous engagement

Our vision for reconciliation is an empowered workforce and supply chain built on mutually respectful relationships between Aboriginal and Torres Strait Islander peoples and the broader community. Underpinning this vision is a strong commitment to do business with, and find opportunities to employ, Aboriginal and Torres Strait Islander talent.

Over the past two years, ABB Australia has developed a strong partnership with Wesley College and the Yiramalay Wesley Studio School program. The school supports the young people

of the Fitzroy Valley community in the Kimberley, Western Australia by facilitating opportunities for industry learning and personal and social learning across cultures in a residential setting.

ABB Australia developed a one-week intensive work experience program for Yiramalay students as part of their Melbourne residential program. Students take part in practical, hands-on tasks in robotics, instrumentation, control, electro-mechanical service, power engineering, software engineering, customer engagement, order processing and logistics.

ABB recognises that a diverse workforce and strong communities contribute to Australia's prosperity and the growth of our business.



ABB Australia Pty Limited

Tel: +61 1800 222 435

abbaustralia.com.au

